



Open Position Available

ENVIRONMENTAL DESIGN ENGINEER GLENWOOD SPRINGS, COLORADO

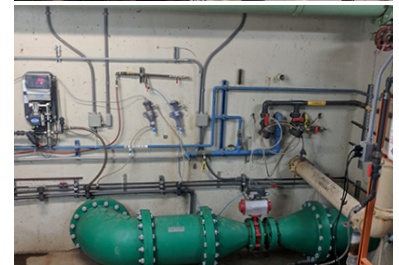
Company Overview

Founded in 1956, JVA, Inc. is a Structural, Civil, and Environmental engineering firm with offices in the downtown communities of Boulder, Fort Collins, Winter Park, Glenwood Springs, and Denver, Colorado. We specialize in civil, infrastructure, environmental, water/wastewater engineering, structural, and historic preservation for public and private entities across the state.

We pride ourselves on our [company values](#), here are a few that truly make us a unique, collaborative engineering firm:

- **Caring Company:** Support co-workers, clients, families, and community. Maintain excellent relationships with co-workers and clients.
- **Integrity:** JVA demonstrates honest, respectful and ethical behavior with both employees and clients.
- **Respect:** Foster a culture of respect, collaboration, diversity, and accountability internally and with clients.
- **Employee Retention:** Hire and retain outstanding individuals for the long term. Professional and personal development of individuals is key to retention by providing mentorship, peer advisement, annual reviews and career planning while maintaining a rich social atmosphere.
- **Innovative:** Provide education, up-to-date technology, and tools to keep JVA on the leading edge of our industry.

Our Environmental Department offers a diversity of projects with emphasis on municipal and special district water/wastewater utility projects. The clients we serve include rural towns, cities, and mountain communities. Our group works across all JVA offices to foster teamwork, professional development, and a variety of project types, clients, and teams. An added bonus of working in our Glenwood Springs office is the chance to take full advantage of the outdoors and have a close proximity to the mountains, rivers, and western slope to enjoy all seasons.



Reports To:
Project Engineer or Project Manager

Location:
Glenwood Springs

Classification:
Design Engineer

Salary Range:
\$65,000 - \$78,000 Annually DOQ

Full-time employees may participate in a comprehensive benefits program that includes:
Annual Salary Raises | Bonuses | Medical and Dental Insurance | Parental Leave | Life Insurance | Short- and Long-Term Disability, and Long-Term Care Insurance | Flexible Spending Account | 401K Plan | Stock Bonus Plan | RTD Ecopass (Boulder and Denver Locations)

Underrepresented individuals are encouraged to apply.

JVA is legally required to verify all new hires with E-Verify.



STRUCTURAL



CIVIL



ENVIRONMENTAL

TO APPLY SEND YOUR RESUME AND COVER LETTER TO
CAREERS@JVAJVA.COM AND FILL OUT THE SHORT FORM HERE:
<https://forms.office.com/r/9LLzRQL2KZ>



JVA, Inc. 1319 Spruce Street, Boulder, CO 80302
303.444.1951 | www.JVAJVA.com

Job Summary

Gain an introduction to environmental engineering and consulting with design assignments from water treatment facility to wastewater treatment facility, and everything in between, while providing engineering excellence for our communities. Our Environmental Design Engineers support and collaborate with design teams of up to 8 engineers on a wide range of small, medium, and large projects each including planning, permitting, design, and construction administration. Design Engineers receive technical guidance and supervisory review and approval from the project team with opportunities to participate and influence creative and innovative solutions.

Example Responsibilities & Activities

- Design process improvements for water and wastewater treatment facilities and/or water distribution and sewer collection system improvements to meet state and federal public health and environmental regulations
- Perform routine aspects of engineering assignments with frequent check-ins with senior team members for input and feedback
- Work on task based assignments with clear and specific objectives
- Set up framework for project deliverables including reports, memos, technical specifications, and permit applications
- Apply standard practices and techniques to solve problems, research design alternatives, adjust and correlate data, and recognize discrepancies in results
- After gaining sufficient experience independently evaluate, select, and apply standard engineering techniques, procedures, and criteria, using judgment in making minor adaptations and modifications
- Prepare grant and loan applications on behalf of clients to briefly describe the project needs and estimated costs to funding agencies
- Support other project team members including the Principal, Managers, Engineers, and Designers to achieve deliverable goals and meet the project deadlines
- Provide on-site and in-office duties during the construction administration phase to support the Project Engineer
- Utilize GIS data management, CAD design, and hydraulic modeling, if capable

Required Competencies

- **Degree and Credential Requirements:** NONE! We value candidates who can demonstrate capability and articulate how prior experiences will help them contribute.
- **Familiarity with Engineer Principles:** Understand engineering elements of water and wastewater treatment facilities, water and sewer utilities, engineering economics, and technical report components.
- **Prioritize and Pivot Effectively:** Produce high quality results while balancing work on a variety of projects and priorities in order to support multiple project teams and deadlines.
- **Communication:** Quickly adapt to others using different forms of communication to easily connect and convey information via phone, text, email, and or chat.
- **Active Listening:** Give full attention to instructions provided, take time to understand points being made, and proactively ask questions to clarify as necessary.
- **Collaboration:** Successfully work within a group to complete a project collectively.
- **Initiative:** Self-motivated to think ahead and proactively support project teams to problem solve and meet deadlines.

Preferred Competencies

- **Ability to obtain E.I. License within one year of hire:** Have the required combination years of education and engineering experience to be able to obtain a E.I. License in the state of Colorado within one year of hire.
- **Software Utilization:** Demonstrated expertise with preparing calculations and reports using MS Office (or similar software suite).
- **Growth mindset:** Able to approach new tasks with a focus on improvement and to continually evolve and develop.

TO APPLY SEND YOUR RESUME AND COVER LETTER TO CAREERS@JVAJVA.COM
AND FILL OUT THE SHORT FORM HERE: <https://forms.office.com/r/9LLzRQL2KZ>

